

## TAIT Software Programming (Windows versions) and Excel

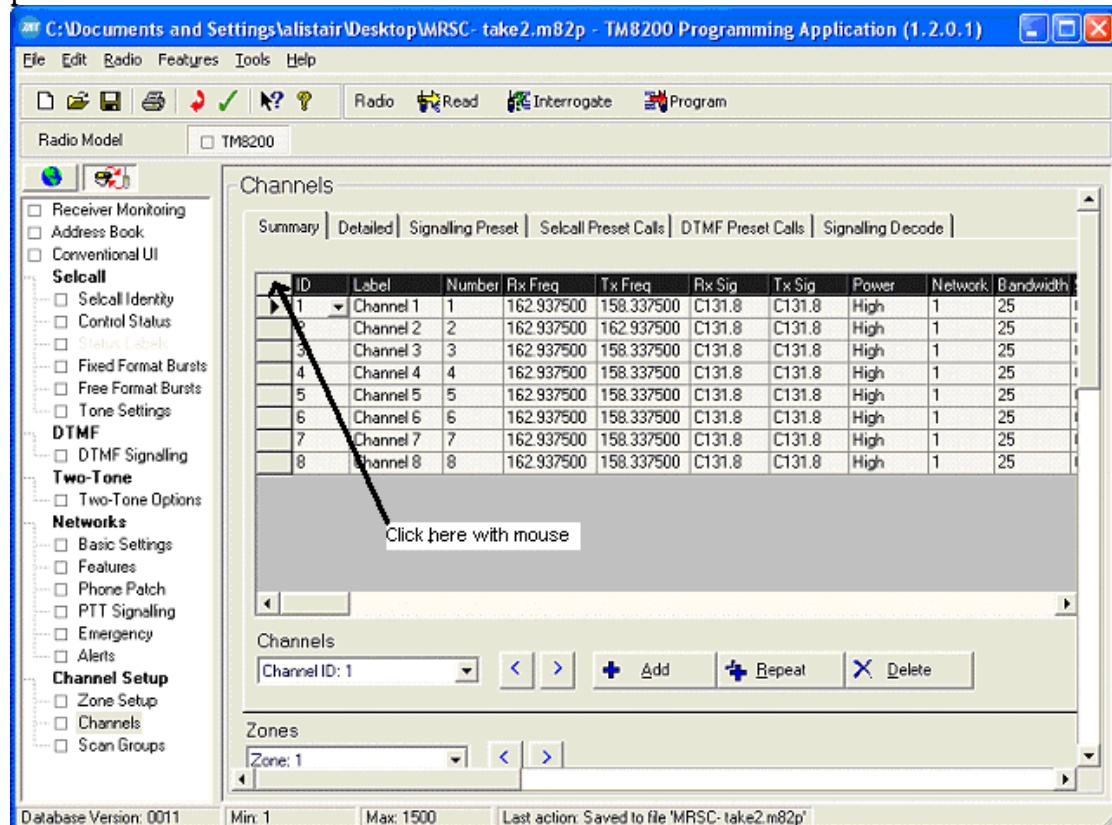
Using an Excel Spreadsheet to manipulate programming data.

The latest Windows versions of Tait programming software can be cumbersome to create or add to and alter large lists of Channels etc. The format of these Channel lists, as well as some other similar screens in the Programming Software can be copied and pasted in to an Excel Spreadsheet and the normal cut, paste and fill commands used to speed up the program changes. This is not possible or necessary with all screens, mainly the larger screens with long lists, i.e. Channels and Preset Calls etc.

The basic function is to start with a template which is unique for each of the Tait models and the screens that are to be manipulated. The T2020, T5020 and TM8250 are prime candidates for this type of operation. With the appropriate template created for each model, it is a simple matter of cutting and pasting cells and or columns one at a time between the Spreadsheet pages for each model. Columns can also be filled with changed data if alterations are required, with the standard functions of the Excel program available for editing.

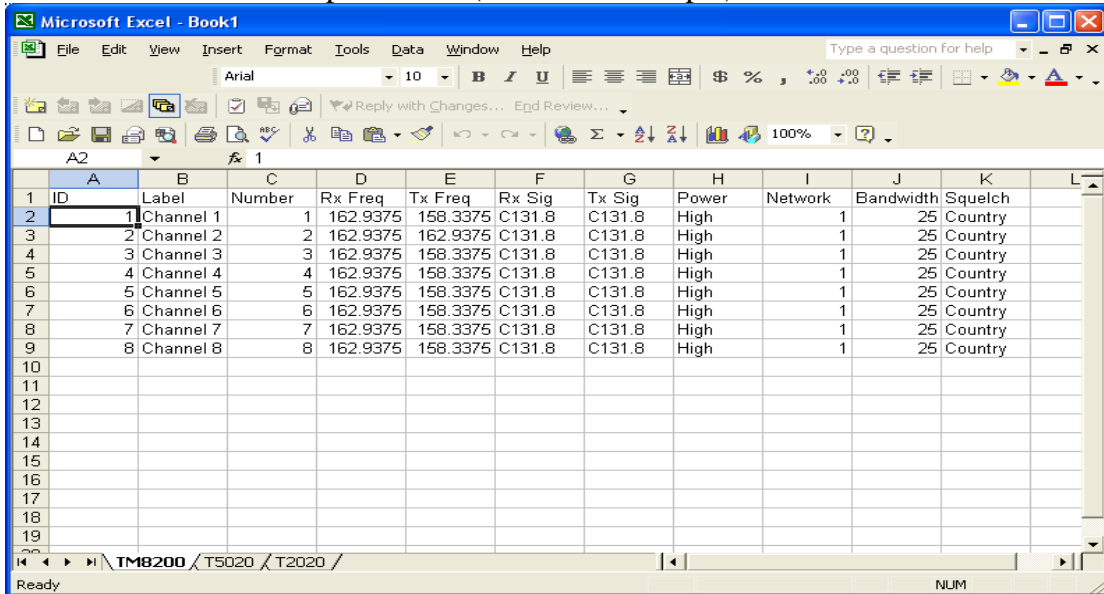
Start the Excel program, and then start each of the Windows versions of Tait Programming Software that you wish to use. Load the Tait programs with any saved databases if you have them, or blank if you are creating something new.

Go to the required page in the Programming Application i.e. Channels. Add some lines of data as a starting point. Right click with the mouse on the top, left hand square of the border of the Channel table (to the left of the field marked ID) and the entire table will change colour to indicate it is selected and click 'copy' from the selection panel.

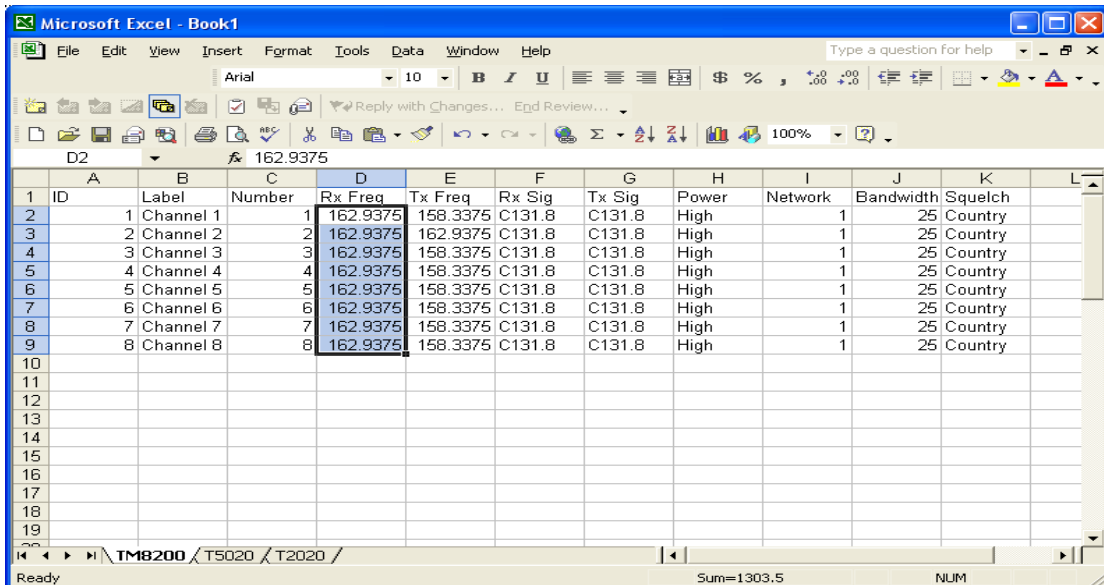


Now transfer to the Excel spreadsheet and from the Toolbar click Edit>Paste. You now have a template of the layout of that radio model and the data from the program to be able to manipulate. The same operation can be performed with the same technique from any of the Tait Windows programs. (With reservations on T2000, see text at the end of this document)

Copy each one to a separate sheet of the spreadsheet. You can rename the sheets to reflect the model the template suits. (see below example)



Using normal Excel operations, columns can be copied and pasted between the different template sheets to create the data required for the new file or to transfer to a different Model.



Shown above is where the RX Frequency column has been copied from the TM8200 template and below it is shown pasted into the T2020 model template sheet.

Microsoft Excel - Book1

File Edit View Insert Format Tools Data Window Help

Arial 10 B I U

C2 162.9375

	A	B	C	D	E	F	G	H	I	J	K	L
1	ID	Channel	Rx Freq	Tx Freq	Rx Sig	Tx Sig	Tx Call	Repeater	Power	Bandwidth		
2	1	CHAN1	162.9375	0	None	None	None	None	High	Narrow		
3	2	CHAN2	162.9375	0	None	None	None	None	High	Narrow		
4	3	CHAN3	162.9375	0	None	None	None	None	High	Narrow		
5	4	CHAN4	162.9375	0	None	None	None	None	High	Narrow		
6	5	CHAN5	162.9375	0	None	None	None	None	High	Narrow		
7	6	CHAN6	162.9375	0	None	None	None	None	High	Narrow		
8	7	CHAN7	162.9375	0	None	None	None	None	High	Narrow		
9	8	CHAN8	162.9375	0	None	None	None	None	High	Narrow		
10												
11												
12												
13												
14												
15												
16												
17												
18												
19												

Ready Sum=1303.5 NUM

This can be continued until the data is complete on the new sheet and then copied and pasted into the Programming application. To select the data to transfer in to the programming application, left click on the bottom right hand field and 'Shift' click on the top left hand corner field. This selects only the correct fields as shown below and that matches the original capture from the program. Do not select the entire spreadsheet by clicking on the top left hand corner square of the border.

Microsoft Excel - Book1

File Edit View Insert Format Tools Data Window Help

Arial 10 B I U

J9 Narrow

	A	B	C	D	E	F	G	H	I	J	K	L
1	ID	Channel	Rx Freq	Tx Freq	Rx Sig	Tx Sig	Tx Call	Repeater	Power	Bandwidth		
2	1	CHAN1	162.9375	0	None	None	None	None	High	Narrow		
3	2	CHAN2	162.9375	0	None	None	None	None	High	Narrow		
4	3	CHAN3	162.9375	0	None	None	None	None	High	Narrow		
5	4	CHAN4	162.9375	0	None	None	None	None	High	Narrow		
6	5	CHAN5	162.9375	0	None	None	None	None	High	Narrow		
7	6	CHAN6	162.9375	0	None	None	None	None	High	Narrow		
8	7	CHAN7	162.9375	0	None	None	None	None	High	Narrow		
9	8	CHAN8	162.9375	0	None	None	None	None	High	Narrow		
10												
11												
12												
13												
14												
15												
16												
17												
18												
19												

Ready Sum=1339.5 NUM

Before pasting in to a new Programming Application, make sure you have selected the correct RF band for the frequencies you are pasting in, otherwise the program will reject the action. Now with the selected data copied from the Excel Spreadsheet go to the appropriate page of the Tait Programming Application and right 'click' on the top left square of the table in the Application and select 'paste' from the choice list, click 'OK' on the menu window to paste. There may be some menus appear, select 'OK' as appropriate on these and if they indicate an error select to continue and check for failure when completed.

#### Be aware of the T2020

There are some issues with the T2020 Programming Software on how it cuts and pastes the data. When copying the Channel info from the program to carry it across to the Excel spreadsheet it shifts Channel 1 to the bottom of the selected data. This can be corrected by adding in a row at the top above Channel 2 and cutting and pasting Channel 1 in from the bottom. Returning the data from the spreadsheet creates another glitch if the programming software already has Channel 1 in the Channel table. Before pasting the new Channel data in to the Channels page, delete all but 1 of the Channels and renumber it to something above the range of the Channels being pasted in. This should allow the operation to proceed without losing Channel 1. The program will say that Channel 1 is not allowed but will write it in anyway, as long as Channel 1 was not already in there.

#### Printing from Programming Application

Beware that currently the TM8000 Programming Application prints all the details of all the channels at 1 page per channel not just the channel table. A big waste of paper. So to get just a print of the channel table; use the Excel spread sheet as before and copy the channel table then paste it into the Excel spreadsheet. Now select your print area to highlight the required text and print from that instead.

